



# Hurrells

Specialist Seeds

AMENITY BROCHURE

[WWW.HMSEEDS.COM](http://WWW.HMSEEDS.COM)

01377 271400

[INFO@HMSEEDS.COM](mailto:INFO@HMSEEDS.COM)

Hurrells  
Specialist Seeds

SPECIALIST SEEDS

WWW.HMSEEDS.CO.UK

01377 271400

POPULAR MIXES  
PAGE 4 - 5

FOOTBALL & RUGBY  
PAGE 5 - 7

CRICKET  
PAGE 8 - 9

BOWLING  
PAGE 10 - 11

GOLF  
PAGE 12 - 19

OUTFIELDS  
PAGE 20

TENNIS  
PAGE 21

POLO AND RACE COURSE  
PAGE 22 - 23

LAWN SEED  
PAGE 24 - 26

FERTILISER  
PAGE 27

WILDFLOWERS  
PAGE 28 - 35

PAGE TESTIMONIALS  
PAGE 38 - 39

## WHY CHOOSE HURRELLS SEEDS?



### THE HURRELLS SEEDS GRASS SEED FORMULA

- Independent supplier (Est 1946)
- Yorkshire based family business - 3rd generation
- Hand selected varieties direct from world leading breeders.
- Supplying seed to retail, trade & wholesale accounts
- HVS premium seed were possible (higher voluntary standard)
- Comprehensive mixture range
- Bespoke mixtures available and made on site
- Unique seed varieties & mixtures adding benefits to you
- Mycorrhizae seed treatment available
- Efficient professional service & advice
- Fast delivery – 1-2 days (in peak season may take longer)

SUPERIOR RANGE - Amenity mixture range selected from Hurrells Seeds trials, technical experience & feedback, STRI recommended lists, breeders trials from across the world and other European grass lists of similar climate

HIGHLY RATED - We are 4.7/5 rated on Google



## COLDSTART (TM)



## FR.1 CSI PREMIUM FOOTBALL/RUGBY



- 100% Winter-active grass seed mix, that is specially developed for use at low soil temperature
- Germinates and grows in soil temperatures down to 3 degrees (other Perennial Ryegrasses require 8-12 degrees)
- Suitable for sowings 11-12 months a year (if soil temperature is 3 degrees +)
- Rapid to germinate and establish (even in cold conditions), extremely fast growing, high wear tolerance, drought tolerant, great all year-round colour and has a high resistance to disease.
- Fine leaved grasses unlike tetraploids and annual ryegrasses
- High endophyte level. The benefits of this are; stronger root growth, quicker establishment, resistant to insect attack, a bird deterrent and an overall stronger plant.
- Ideal for Autumn or Early spring renovations. Suitable for all heavy wear sports and hardwearing lawn/landscaping areas

- Premium 100% Dwarf Perennial Ryegrass Football & Rugby Pitch Grass Seed Mixture with Creeping Ryegrass
- Ultra hard wearing and dense grass for the perfect playing surface
- Can be used for new pitch construction or renovation for Football/ Rugby Pitches or for other areas which receive heavy wear
- Very fast recovery rate
- This premium grass seed mixture is extremely quick to germinate and quick to be fully established
- Highly rated STRI grasses - includes leading cultivars
- The CSI Corsica Spreads with a Creeping growth habit
- Creeping, spreading, innovative (CSI™ Rye) A permanent Turf Perennial Ryegrass that has the ability to repair damaged turf quickly via reproductive Tillers.
- Rigorous disease resistance profile

In the **#PURPLEBAG**

50% AGREEMENT Dwarf Perennial Ryegrass - WINTER ACTIVE  
50% VERMILLION Dwarf Perennial Ryegrass - WINTER ACTIVE  
100%

In the **#PURPLEBAG**

30% CSI CORSICA Creeping Ryegrass  
30% EUROPITCH Dwarf Perennial Ryegrass  
20% EUROSPORT Dwarf Perennial Ryegrass  
20% MONROE Dwarf Perennial Ryegrass  
100%

NEW SOWING 50-70G PER M2 | OVERSEEDING 25-50G PER M2 | SKU: 8108

NEW SOWING 50-70G PER M2 | OVERSEEDING 25-50G PER M2 | SKU: 8021



## FR.2 PREMIUM FOOTBALL/RUGBY



- FR.2 is a Premium 100% Dwarf Perennial Ryegrass Football & Rugby Pitch Grass Seed Mixture
- Ultra hard wearing and dense grass for the perfect playing surface
- It can be used for new pitch construction or renovation for Football/ Rugby Pitches or for other areas which receive heavy wear
- Very fast recovery rate
- Great all year round colour
- This premium grass seed mixture is extremely quick to germinate and quick to be fully established
- Highly rated STRI grasses - includes leading cultivars

### Testimonial

Michael Botham, Botham's Prestige Sports Contractors, Rotherham. "I always get better results by using Hurrells Seeds, especially when i started using FR.2"

In the **#PURPLEBAG**

20% MONROE Dwarf Perennial Ryegrass  
30% EUROCORDUS Dwarf Perennial Ryegrass  
20% DURANOVA Dwarf Perennial Ryegrass  
30% EUROPITCH Dwarf Perennial Ryegrass  
100%

NEW SOWING 50-70G PER M2 | OVERSEEDING 25-50G PER M2 | SKU: 8022

## FR.3 CONTRACTOR FOOTBALL/RUGBY



- A rated mixture for Groundsmen & contractors
- Suitable for pitch renovations and new pitches
- Perfect for areas that receive high amounts of wear
- High shoot density
- Good ground cover
- Super quick recovery
- Good all year round colour
- Rated STRI grasses

Testimonial - Rob Bradshaw, Head Groundsman at One Leisure - Cambridgeshire. "Having trialled economy FR.3 Hurrells Seed Mix, I was very impressed with the germination, colour and establishment on my playing surface. With being a local authority site, budgets are tight, the economy mix is affordable at a low cost with excellent results!"

In the **#PURPLEBAG**

30% TURFGOLD Dwarf Perennial Ryegrass  
35% ESQUIRE Dwarf Perennial Ryegrass  
35% FANCY Dwarf Perennial Ryegrass  
100%

NEW SOWING 50-70G PER M2 | OVERSEEDING 25-50G PER M2 | SKU: 8020



## CR.1 PREMIUM CRICKET SQUARES

Testimonial  
John Dodds, Head Groundsman at Scarborough Cricket Club (Outfield Groundsman of the year). " I have used Hurrells Grass Seeds throughout my career as a cricket groundsman and I have always been impressed with their quality standards and performance of their grass seeds, I have used them for many years at Scarborough Cricket Club now"

- Premium, leading and top selling Cricket Square grass seed mix. Tested and blended in Yorkshire
- CR.1 originally born from our unique relationship with Scarborough Cricket Club (for 25+ years). Cultivars used and tested by John Dodds of Scarborough CC.
- Mixture selected from a combination of; Hurrells onsite testing, John Dodds experience, David Hodgson seed trials and STRI testing (highly rated on the STRI list)
- Rapid establishment and strength from superior rooting cultivars
- Cultivars have been chosen to reduce crowning on the wicket
- High density turf with a very fine leaf
- Good all year-round colour
- Will tolerate a close cut
- Quick recovery after wear

In the **#PURPLEBAG**

CR.1 Premium Cricket Squares Grass Seed Mix  
25% EVENTUS Dwarf Perennial Ryegrass  
25% PENELOPE Dwarf Perennial Ryegrass  
25% CHLOE Dwarf Perennial Ryegrass  
25% BARSIGNUM Dwarf Perennial Ryegrass  
100%

NEW SOWING 50-70G PER M2 | OVERSEEDING 25-50G PER M2 | SKU: 8023



## CR.3 ECO CRICKET SQUARES



- Cricket Square mix blended in Yorkshire
- Rapid Establishment
- Cultivars chosen to reduce crowning on the wicket
- Good all year round colour
- Mixture produces a very fine leaf and good shoot density
- Will also tolerate a close cut
- Very fast and good root establishment
- Quick recovery after wear
- Eco version of CR.1
- STRI rated grasses

In the **#PURPLEBAG**

30% BARORLANDO Dwarf Perennial Ryegrass  
35% ESQUIRE Dwarf Perennial Ryegrass  
35% FANCY Dwarf Perennial Ryegrass  
100%

SKU: 8030

## CR.2 CRICKET OUTFIELDS



- It has an inclusion of a fine leafed perennial ryegrass which adds a super fast establishment, good colour and an excellent wear tolerance
- Both Strong & Slender Creeping Red Fescue knit all the surface together for a dense even surface
- A Good all year round grass colour which also gives a clean cut when mown
- Can be used for over-sowing existing outfielders or on new outfielders
- used by 100's of Cricket Club in the UK

In the **#PURPLEBAG**

30% TURFGOLD Dwarf Perennial Ryegrass  
25% MAXIMA Strong Creeping Red Fescue  
25% EUROMARIE Slender Creeping Red Fescue  
15% HIGHNOTE Chewings Fescue  
5% HIGHLAND Browntop Bentgrass  
100%

SKU: 8024

## BG.1 PREMIUM GREENS



- BG.1 is a Premium Bowling Green grass seed mixture
- This mix will produce an excellent even playing surface
- It has an excellent visual merit
- The Bowling green recover well after wear
- It can be used for both over-seeding existing Bowling greens or establishing new ones
- Produces a fine leaved dense sward
- Drought tolerant
- Great disease tolerance

In the **#PURPLEBAG**

BG.1 Premium Greens Grass Seed Mix  
 45% GIMA Chewings Fescue  
 45% SEROA Slender Creeping Red Fescue  
 10% CLEEK Browntop Bent  
 100%

SKU: 8013

## BG.2 GREEN BAIZE



- Slightly different to the conventional bowling green mixture, the BG.2 mixture includes 50% Dwarf Perennial Ryegrass which is a fairly new idea for Bowling Greens.
- The Dwarf Perennial Ryegrass adds many benefits including a faster germination, faster growth, better wear tolerance and high disease resistance whilst being almost as fine as the rest of the grasses.
- Produces a very close knit grass sward which will withstand regular mowing

In the **#PURPLEBAG**

25% DICKENS Dwarf Perennial Ryegrass  
 25% CHLOE Dwarf Perennial Ryegrass  
 20% SEROA Slender Creeping Red Fescue  
 25% DIPPER Strong Creeping Red Fescue  
 5% HIGHLAND Browntop Bentgrass  
 100%

SKU: 8047

## BG.3 PREMIUM RYE GREENS



Testimonial

David Brown Head Groundsman Cononley BC "Just completed the 2nd cut since our end of season renovations. Took 9 loads off at 8mm. At this time I was taking off 3. So pleased with the response on our green using BG3. A great colour and thick sward."

- Premium version of BG.2 with higher rated cultivars & a premium bentgrass
- The Dwarf Perennial Ryegrass adds many benefits including a faster germination, faster growth, faster establishment, better wear tolerance and high disease resistance whilst being almost as fine as the rest of the grasses.
- Ryegrass cultivars have been chosen to reduce crowning on the playing surface
- It produces a very close knit grass sward which will withstand regular low mowing
- Easy to establish & harder wearing compared with a traditional Fescue Bent mix
- Good drought tolerance

In the **#PURPLEBAG**

25% CHLOE Dwarf Perennial Ryegrass  
 25% CHARDIN Dwarf Perennial Ryegrass  
 20% SEROA Slender Creeping Red Fescue  
 20% GIMA Chewings Fescue  
 5% CLEEK Browntop Bentgrass  
 5% MANOR Browntop Bentgrass  
 100%

NEW SOWING 50-70G PER M2 | OVERSEEDING 25-50G PER M2 | SKU: 8070



## HG.1 PREMIUM ALL BENT GREENS



- Premium Bent mixture - one of the best mixtures on the market
- Very high shoot density
- Good disease tolerance
- Great all year round colour
- Tolerant to very close mowing
- Excellent for over-sowings throughout the year for renovation work
- Can be used for new green constructions, however see HG.3 for an option with fescue
- Will tolerate very low cutting regimes for fast, even and superior greens.
- Premium cultivars that are highly rated in the STRI booklet

In the **#PURPLEBAG**

50% MANOR Bentgrass  
50% CLEEK Bentgrass  
100%

NEW SOWING 8G PER M2 | OVERSEEDING 5G PER M2 | SKU: 8011A

## HG.2 CREEPING BENT GREENS



- Creeping bent has the highest shoot density and tillering capacity compared to all other bent grass types
- Includes highly rated creeping bent on the current STRI turf grass list
- Great disease tolerance & excellent all year round colour
- Recommend low nitrogen applications to prevent thatch previously associated with older creeping bent cultivars
- Exceptionally tolerant to very low cutting heights

In the **#PURPLEBAG**

100% COBRA NOVA Creeping Bent  
100%

SKU: 8012

## HG.3 PREMIUM GREENS



- A very popular ultra-fine Fescue / Bent Grass Seed Mixture
- It will tolerate very low cutting regimes for fast, even and superior greens
- Produces excellent all year round greens
- Cultivars used are very high quality
- Can be used for new green constructions
- Can be used to over sow greens for renovation work
- Highly rated STRI grasses

In the **#PURPLEBAG**

45% GIMA Chewings Fescue  
45% SEROA Slender Red Fescue  
10% CLEEK Bentgrass  
100%

SKU: 8013

## HPG TURF PERENNIAL GREENS



- A new mixture of a Dwarf Perennial Ryegrass's for Golf Greens and other fine hardwearing areas
- "Sowing to mowing" in bare areas in 9 days (in ideal conditions)
- Low mowing height - as low as 4mm
- Performance tested to improve greens that struggle using traditional Fescue & Bent Grass
- Through testing preferred cultivars very fine leaf turf type perennials
- High shoot density

In the **#PURPLEBAG**

40% CHLOE Dwarf Perennial Ryegrass  
40% DICKENS Dwarf Perennial Ryegrass  
20% BARSIGNUM Dwarf Perennial Ryegrass  
100%

SKU: 8064

## HPG CSI CREEPING TURF PERENNIAL GREENS



- Creeping, spreading, innovative (CSI™ Rye) A permanent Turf Perennial Ryegrass that has the ability to repair damaged turf quickly via reproductive Tillers.
- Low mowing height - as low as 4mm
- Performance tested to improve greens that struggle using traditional Fescue & Bent Grass
- Through testing preferred cultivars very fine leaf turf type perennials
- Excellent dark green colour - very healthy natural appearance

In the **#PURPLEBAG**

30% CSI CORSICA Creeping Ryegrass  
30% BARSIGNUM Dwarf Perennial Ryegrass  
40% CHLOE Dwarf Perennial Ryegrass  
100%

SKU: 8064C

## HF.1 NON RYEGRASS FAIRWAYS



- A premium fairway grass seed mixture without rye
- Good visual merit due to fine leafed grass varieties
- It takes slightly longer to establish than the rye grass option but requires less cutting and gives a finer finish for a perfect playing surface
- Good all year round colour
- Can be used for new sowings or re-seeding renovations on the fairways
- Very good drought tolerance

In the **#PURPLEBAG**

30% RIDU Hard Fescue  
25% EUROMARIE Slender Creeping Red Fescue  
25% MAXIMA Strong Creeping Red Fescue  
20% HIGHNOTE Chewings Fescue  
100%

SKU: 8014

## HF.2 RYEGRASS FAIRWAYS



- A Premium fairway grass seed mixture with Ryegrass (See HF.1 option without Rye)
- Ultra hard wearing
- Extremely quick to germinate
- Good visual merit due to fine leafed grass varieties
- The best mix for high traffic areas because of quick re-growth from wear and tear
- Very fast to establish for new sowings or renovations on the fairways and other areas including tees & semi-roughs

In the **#PURPLEBAG**

20% CHLOE Dwarf Perennial Ryegrass  
25% CSI CORSICA Creeping Ryegrass  
20% EUROMARIE Slender Creeping Red Fescue  
20% MAXIMA Strong Creeping Red Fescue  
15% HIGHNOTE Chewings Fescue  
100%

SKU: 8015



## HT.1 RYEGRASS TEES



- Grass seed mix for Golf Tees
- The ryegrass in this mixture will enable a rapid fast establishment
- Excellent wear tolerance
- Very good shoot recovery
- Excellent disease resistance
- Can be used for new Golf tee's, over sowings and patching up divots
- Includes naturally occurring endophytes which makes the plant stronger
- Good all year round colour

In the **#PURPLEBAG**

50% RESISTUS Dwarf Perennial Ryegrass  
50% FIREBIRD Dwarf Perennial Ryegrass  
100%

SKU: 8016

## HT.2 NON RYEGRASS TEES



- A Premium fairway grass seed mixture with Ryegrass (See HF.1 option without Rye)
- Ultra hard wearing
- Extremely quick to germinate
- Good visual merit due to fine leafed grass varieties
- The best mix for high traffic areas because of quick re-growth from wear and tear
- Very fast to establish for new sowings or renovations on the fairways and other areas including tees & semi-roughs

In the **#PURPLEBAG**

20% CHLOE Dwarf Perennial Ryegrass  
25% CSI CORSICA Creeping Ryegrass  
20% EUROMARIE Slender Creeping Red Fescue  
20% MAXIMA Strong Creeping Red Fescue  
15% HIGHNOTE Chewings Fescue  
100%

SKU: 8015

## HT.4 ULTIMATE TEES



- The ultimate grass seed mix for Tees, Divots and other hardwearing areas
- Includes Creeping Ryegrass, that regenerates itself after damage with reproductive tillers
- Includes a winter active Perennial Ryegrass that grows down to soil temperatures of 5 degrees
- Ultra fast establishment and recovery after damage
- Great all year round colour

In the **#PURPLEBAG**

40% CSI CORSICA Creeping Ryegrass  
30% AGREEMENT Winter Active Dwarf Perennial Ryegrass  
30% CHARDIN Dwarf Perennial Ryegrass  
100%

NEW SOWING 50-70G PER M2 | OVERSEEDING 25-50G PER M2 | SKU: 8082

## HM CHAMPIONSHIP FESCUE



- Championship fescue performance combined with optimal sustainability
- Lower fertiliser, chemical and water inputs leading to lower operational costs and maintenance efforts
- Hard Fescue is currently being advised to reduce/stop insect damage
- Extremely high drought and heat stress tolerance (proven in current variable climatic conditions)
- Can tolerate acidic-normal soils. Mixture requires 4.5-6.5 soil pH, with hard fescue growing healthily down to 3.8 pH
- Other benefits include high salt tolerance, high shade tolerance, high disease tolerance (including red thread), high shoot density, etc
- Used on a selection of top 100 UK golf courses (including two in )
- Exceptionally fine leaved for use on fairways, green surrounds, tees and roughs. Ideal for normal-sandy soils

In the **#PURPLEBAG**

25% DUMAS Hard Fescue  
20% BORNITO Hard Fescue  
25% DIPPER Strong Creeping Fed Fescue  
10% CEZANNE Slender Creeping Red Fescue  
20% HIGHNOTE Chewings Fescue  
100%

NEW SOWING 50-70G PER M2 | OVERSEEDING 25-50G PER M2 | SKU: 8057

## HM FESCUE



- 100% Fescue Grass Seed mix that provides a good resistance to disease
- Exceptionally good shoot density
- Tolerant to low cutting
- Fescues are pH tolerant and naturally adapted for use on the golf course
- Can be used for most areas of the golf course for that perfect finish where rye is not used or required (Greens, Green Surrounds, Fairways, Tee's etc)
- Adapted for Golf Course areas (or any other area) that may be sandy or suffer drought

In the **#PURPLEBAG**

25% SEROA Slender Creeping Red Fescue  
25% CEZANNE Slender Creeping Red Fescue  
25% HUMBOLDT Chewings Fescue  
25% GIMA Chewings Fescue  
100%

SKU: 8037

## HR.1 GOLF ROUGHS



- Fescue grass seed mix for Golf Roughs
- Designed to make rough areas easy to manage (Doesn't require much cutting)
- Providing a natural looking area
- Allows balls to be visible when players are looking in there
- The grass will not grab the Golf club too much when playing out of the rough (unlike coarse leaved quick growing plants that make it very difficult for the golfer)

In the **#PURPLEBAG**

30% RIDU Hard Fescue  
40% MAXIMA Strong Creeping Red Fescue  
15% CAPRICCIO Chewings Fescue  
15% PINAFORE Slender Creeping Red Fescue  
100%

SKU: 8018



## GO.1 GENERAL OUTFIELDS



- 100% Fescue Grass Seed mix that provides a good resistance to disease
- Exceptionally good shoot density
- Tolerant to low cutting
- Fescues are pH tolerant and naturally adapted for use on the golf course
- Can be used for most areas of the golf course for that perfect finish where rye is not used or required (Greens, Green Surrounds, Fairways, Tee's etc)
- Adapted for Golf Course areas (or any other area) that may be sandy or suffer drought

In the **#PURPLEBAG**

30% FIREBIRD Dwarf Perennial Ryegrass  
 30% MAXIMA Strong Creeping Red Fescue  
 10% PINAFORE Slender Creeping Red Fescue  
 20% ANNALENA Chewings Fescue  
 5% MIRACLE Smooth Stalked Meadowgrass  
 5% HIGHLAND Browntop Bentgrass  
 100%  
 SKU: 8028

## GO.2 GENERAL SPORTS GRASS



- Very quick establishing, fast growing grass seed mix
- High-quality Dwarf Perennial Ryegrass's that are fine leaved
- Dwarf Perennial Ryegrass's will make the speed of establishment ultra fast and hard wearing
- The Strong Creeping Red Fescue element will bind the turf together making an overall thicker sward due to its creeping growth habit
- Great for school fields, sports fields etc

In the **#PURPLEBAG**

40% BECKHAM Dwarf Perennial Ryegrass  
 30% TURFGOLD Dwarf Perennial Ryegrass  
 30% MAXIMA Strong Creeping Red Fescue  
 100%

SKU: 8048

## TN.1 TENNIS COURTS



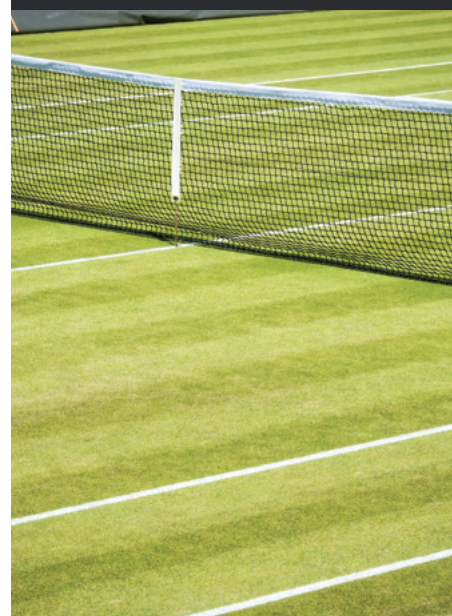
- Successful grass seed mix for Tennis Courts
- Quick to establish
- Produces a dense hard wearing sward
- Fine leaved varieties
- Quick to recover
- Tolerant to close mowing
- Creates an even playing surface (varieties don't crown)

In the **#PURPLEBAG**

40% RESISTUS Dwarf Perennial Ryegrass  
 30% ANNALENA Chewings Fescue  
 25% MAXIMA Strong Creeping Red Fescue  
 5% HIGHLAND Browntop Bentgrass  
 100%

SKU: 8025

## TN.2 ALL RYE TENNIS COURTS



- Modern 100% Ryegrass seed mix for tennis courts
- Quicker to establish, harder wearing & quicker to recover over a Fescue / Rye Mix like TN.1
- Specially selected fine leaved, non-crowning varieties of Dwarf Ryegrass for a true even playing surface
- These varieties are even tolerant to close mowing for tennis

In the **#PURPLEBAG**

40% CHLOE Dwarf Perennial Ryegrass  
 40% PENELOPE Dwarf Perennial Ryegrass  
 20% EVENTUS Dwarf Perennial Ryegrass - WINTER ACTIVE  
 100%

SKU: 80251

## HP.1 NEW POLO PITCH



- Produces a hard wearing, true playing surface
- Fast establishment
- Good ground cover
- Excellent recovery from wear
- Large inclusion of Smooth Stalked Meadow grass for strong root structure
- Strong and Slender Creeping Red Fescue also bind the playing surface together

25% DICKENS Dwarf Perennial Ryegrass  
 25% EUROPITCH Dwarf Perennial Ryegrass  
 25% MIRACLE Smooth Stalked Meadow Grass  
 15% DIPPER Strong Creeping Red Fescue  
 10% PINAFORE Slender Creeping Red Fescue  
 100%

SKU: 8044

## HP.3 PREMIUM POLO RENO



- Premium polo renovation grass seed mixture
- Creates a hardwearing playing surface with good live ground cover, enabling great recovery from wear
- Smooth stalked meadow grass will help the sward to produce a strong root structure
- Suited for summer and early autumn sowings

20% DAKASHI Smooth Stalked Meadow Grass  
 20% MIRACLE Smooth Stalked Meadow Grass  
 30% DICKENS Dwarf Perennial Ryegrass  
 30% MONROE Dwarf Perennial Ryegrass  
 100%

SKU: 8051

## HM.38 NON RYE HORSE Paddock



Non Rye Pony / Equine / Horse Paddock Grass Seed Mix (5+ Years Grazing)  
 2.50 kg PARDUS Meadow Fescue  
 2.50 kg LIHEROLD Meadow Fescue  
 2.00 kg COMER Timothy  
 2.00 kg SWAJ Tall Fescue  
 1.00 kg BORNITO Hard Fescue  
 3.00 kg MAXIMA Strong Creeping Red Fescue  
 0.50 kg EVORA Smooth Stalked Meadow Grass  
 0.15 kg SOUTHLANDS Crested Dogstail  
 0.10 kg Meadow Foxtail  
 0.10 kg DASAS Rough Stalked Meadow Grass  
 0.15 kg HIGHLAND Common Bentgrass  
 14.00 kg per acre

SKU: 7047

## HRC.1 PREMIUM RACECOURSES



- Premium Racecourse grass seed blend, with premium fine leaved dwarf perennial ryegrass
- Very quick establishment and growth
- Extremely durable grass sward
- Super quick recovery after damage
- Highly rated STRI cultivars
- Can be used for new sowing's or end of season renovation

30% FIREBIRD Dwarf Perennial Ryegrass  
 30% CARNAC Dwarf Perennial Ryegrass  
 20% BARORLANDO Dwarf Perennial Ryegrass  
 20% EUROPITCH Dwarf Perennial Ryegrass  
 100%

SKU: 8044

## HRC.2 ECO RACECOURSES



- Grass seed mix for a Racecourse with 100% Ryegrass
- Very quick establishment
- Withstands extremely hard wear
- Very quick recovery time
- Fine leaved Dwarf Perennial Ryegrass's
- Can be used for new sowing's or end of season renovation

35% ESQUIRE Dwarf Perennial Ryegrass  
 35% GREENWAY Dwarf Perennial Ryegrass  
 30% FANCY Dwarf Perennial Ryegrass  
 100%

SKU: 8049

## HM.8 EQUINE/HORSE Paddock



Equigraze - Equine / Pony / Horse Paddock Grass Seed Mix (5+ Years Grazing)

2.00 kg GLASKER Perennial Ryegrass Early Dip  
 4.00 kg BOYNE Perennial Ryegrass Int Dip  
 4.00 kg TODDINGTON Perennial Ryegrass Late Dip  
 1.50 kg COMER Timothy  
 0.50 kg EVORA Smooth Stalked Meadow Grass  
 2.00 kg MAXIMA Strong Creeping Red Fescue  
 14.00 kg per acre

SKU: 7008



## HM. ALL AMERICAN



- Newly developed mix for a dark green luxurious velvet finish
- American cultivars are much darker in colour (in summer & winter months) compared with European cultivars
- Exceptional all year round colour
- Fast to establish and germinate
- Good shade tolerance
- High drought resistance
- Can also tolerate damp/wet areas
- Optimum pH is 5.5-7
- Grows in a wide range of soils

In the **#PURPLEBAG**

25% CSI CORSICA Creeping Rye  
 25% ESQUIRE Perennial Ryegrass  
 20% SC1 Dwarf Tall Fescue  
 20% MIRACLE Smooth Stalked Meadow Grass  
 10% DUMAS Hard Fescue  
 100%

SKU: 8085

## HM. STRESS BUSTER



- Modern 100% Ryegrass seed mix for tennis courts
- Quicker to establish, harder wearing & quicker to recover over a Fescue / Rye Mix like TN.1
- Specially selected fine leafed, non-crowing varieties of Dwarf Ryegrass for a true even playing surface
- These varieties are even tolerant to close mowing for tennis

In the **#PURPLEBAG**

25% SC1 Amenity Tall Fescue [Rhizomatous]  
 25% ESSENTIAL Amenity Tall Fescue [Rhizomatous]  
 50% DOUBLE TET Perennial Ryegrass  
 100%

SKU: 8740

## HM. FOUR SEASONS



- Ideal lawn seed mixture for late autumn/winter/early spring lawn renovations
- Part of the mix grows down to soil temperatures of 5 degrees (normal lawn mixtures require 10 degrees)
- A premium, hardwearing fine leaved mixture (for an ultra-hardwearing 100% winter active mixture see Coldstart)

30% Vermilion Dwarf Perennial Ryegrass  
 30% Strong Creeping Red Fescue  
 10% Slender Creeping Red Fescue  
 20% Chewings Fescue  
 5% Smooth Stalked Meadow Grass  
 5% Browntop Bent  
 100%  
 SKU: 8101

## HM.1 FINE LAWN



- Ultimate short, dense and fine turf grass seed mix
- Ideal for lawn enthusiasts, croquet lawns and bowling greens
- Uses the finest and most prestigious grass species
- Fantastic visual merit and appearance
- Can be cut very low (down to 3mm)

40% Chewings Fescue  
 40% Slender Creeping Red Fescue  
 20% Browntop Bent  
 100%

SKU: 8001

## HM.2 PREMIUM



- Non-ryegrass seed mix for low maintenance areas (minimal cutting)
- Ideal for lawn enthusiasts, gardeners, landscapers and domestic users
- Fine leaved species with a high shoot density
- Fantastic visual merit and appearance
- Excellent all year-round colour
- Ideal for low-medium amounts of traffic

45% Strong Creeping Red Fescue  
 15% Slender Creeping Red Fescue  
 30% Chewings Fescue  
 5% Smooth Stalked Meadow Grass  
 5% Browntop Bent  
 100%

SKU: 8002



## HM.3 HARDWEARING



- A premium, hard wearing lawn seed mixture
- Easy fast germination and rapid establishment (See HM.4 General Amenity, for the fastest/toughest mix we offer)
- Striking visual merit and appearance for a lush front or back lawn
- Tolerates high levels of foot and pet wear
- Excellent all year-round colour

30% Dwarf Perennial Ryegrass  
 30% Strong Creeping Red Fescue  
 10% Slender Creeping Red Fescue  
 20% Chewings Fescue  
 5% Smooth Stalked Meadow Grass  
 5% Browntop Bent  
 100%  
 SKU: 8003

## HM.4 GENERAL AMENITY



- HM.4 is a general fine leaved amenity grass seed mixture
- Easy to germinate, with rapid establishment and growth (fastest growing amenity mixture)
- Ideal for new areas, over seeding and patching worn out areas
- Great recovery after large amounts of wear
- Very popular for landscapers, domestic lawns

50% Dwarf Perennial Ryegrass  
 50% Strong Creeping Red Fescue  
 100%  
 SKU: 8004

## HM.5 SHADE



- Non-ryegrass seed mix for low maintenance areas (minimal cutting)
- Ideal for lawn enthusiasts, gardeners, landscapers and domestic users
- Fine leaved species with a high shoot density
- Fantastic visual merit and appearance
- Excellent all year-round colour
- Ideal for low-medium amounts of traffic

20% Dwarf Perennial Ryegrass  
 40% Strong Creeping Red Fescue  
 13% Slender Creeping Red Fescue  
 2% Wood Meadow Grass  
 5% Smooth Stalked Meadow Grass  
 15% Hard Fescue  
 5% Browntop Bent  
 100%  
 SKU: 8005



## Thomas Elliott Pre-seeder Fertiliser 6-9-6

- High phosphate pre-seeding fertiliser
- 6+9+6 typical pre-seeding formula for all areas
- Promotes good root development on new and established turfs
- Releases nutrients over a 4-6 week period
- Dust free, uniform 2-4mm homogeneous mini granules
- Consistent and dependable performance
- Ideal for easy and accurate application
- Soluble nutrient sources produce quick green-up
- Spread up to 2 weeks before sowing the seed or spread at the same time
- Apply at 35-70g/m<sup>2</sup> (Covers 357-714m<sup>2</sup>)

## Thomas Elliott Lawn Feed &amp; Weed + Moss Killer Fertiliser 10-2-1.7+8Fe

- Combined fertiliser, moss control and weedkiller
- 4 in 1 action formulation that makes grass greener, thicker, kills weeds and blackens/kills moss
- Includes herbicides to kill and control many broad leaved weeds (such as daisy, plantain, buttercup, dandelion, white clover, birdsfoot trefoil, speedwell, selfheal, chickweed, lesser trefoil, creeping cinquefoil etc).
- Supplied in slow release, granular form to ensure long lasting action
- Can be used throughout the growing season
- Dead moss and other debris should be raked out 10 to 14 days after application
- Apply at 32g/m<sup>2</sup> (Covers 625m<sup>2</sup>)



## Thomas Elliott Spring Summer Fertiliser 10-4-4+3.5fe

- Spring and summer fertiliser that will deliver good all-round performance
- Ideal balance of NPK to strengthen turf
- Encourages better root development and harder growth
- Also includes Iron that is a rapid green up, hardens turf against diseases and blackens moss
- Releases nutrients over a 4-6 week period
- High quality slow release mini-granular fertiliser
- Ideal for easy and accurate application
- Soluble nutrient sources produce quick green-up
- Apply at 35g/m<sup>2</sup> (Covers 714m<sup>2</sup>)



## Thomas Elliott Autumn Winter Fertiliser 5-5-10+2fe

- Autumn and winter fertiliser that will help create a denser sward, increase tillering, increase root development, increase resistance to stress etc, encourages steady growth, improve root development etc.
- Also includes Iron that is a rapid green up, hardens turf against diseases and blackens moss
- Releases nutrients over a 4-6 week period
- High quality slow release mini-granular fertiliser
- Consistent and dependable performance
- Soluble nutrient sources produce quick green-up
- Apply at 35g/m<sup>2</sup> (Covers 714m<sup>2</sup>)



## Mivena Controlled Release Universal Fertiliser 21-5-11+1MgO

- Universal controlled release, resin coated fertiliser
- Releases nutrients over a 2-3 month period! Can last upto 4 months
- Quick and effective results that last with no flushes of growth
- Less leaching due to Granupermanent CRF technology
- Spring, Summer & Autumn fertiliser that will deliver year round performance
- Safe to use - no uncoated urea
- Contains Magnesium, which makes more winter hardy, helps utilise Iron and phosphate. Essential for nitrogen metabolism and chlorophyll synthesis
- Perfect for lawns, landscaping, football, rugby, golf, racecourses etc
- Apply at 20-40g/m<sup>2</sup> (Covers 500-1000m<sup>2</sup>)





## Wildflower Seed

Since WW2, 97% of wildflower meadows have been lost..

Setting aside an area of your land for wildflower seed, can not only provide amazing colour, but it will also help the environment. These meadows provide essential habitats, shelter and food for very important pollinators. Visiting animals can include Bees, Butterflies, Moths, Spiders, Birds, Hedgehogs, Bats + many more species! All our mixtures also include a large range of species from the RHS Plants For Pollinators lists.

100% Wildflower Seed Mixtures are without Grass (sow at 2-4 grams per m2)

80:20 Grass & Wildflower Seed Mixtures are 80% Grass Seed & 20% Wildflower Seed (sow at 5 grams per m2)

### URBAN HIGH COLOUR

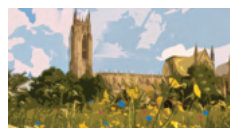
- Super high colour and easy to establish
- Includes native wildflowers and horticultural flowers
- Sow without grasses for best results
- High inclusion of annuals. Mixtures with & without perennials
- Ideal for urban landscapes, gardens, meadows, schools, councils etc
- Can be used as a new meadow or added into existing meadows
- Environmentally friendly (provides habitats for Bees, Butterflies etc)



URBAN HIGH COLOUR

### MINSTER MEADOWS

- UK native wildflower seed mixtures
- Made to replicate traditional wildflower meadows
- Available with and without grass
- Mixtures predominantly perennials but most include annuals
- Ideal for meadows, farmland, landscape specs, councils, gardens etc
- Can be used as a new meadow or added into existing meadows
- Environmentally friendly (provides habitats for Bees, Butterflies etc)



MINSTER MEADOWS



### URBAN HIGH COLOUR



### MINSTER MEADOWS



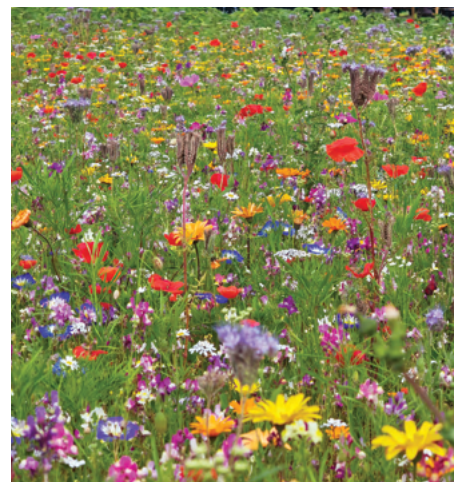
### STRAITS AVAILABLE



### HC1 ANNUAL ETNA (ANNUAL)

Annual Wildflowers Included: Black Eyed Susan, California Poppy, Candy Tuft, Chrysanthemum Carinatum Rainbow, Cornflower, Corn Poppy, Fairy Toadflax, Godetia Azalea, Larkspur, Oriental Poppy, Red Flax, Shirley Singles Poppy, Sulphur Cosmos [Dwarf] & Zinnia Elgans

100% 2-4G 80:20 5G per m2 | SKU: 8976



### HC2 FIELD OF DREAMS (ANNUAL)

Annual Wildflowers Included: African Daisy, Babys Breath, Black Eyed Susan, Blue Flax, California Poppy, Candy Tuft, Chrysanthemum Carinatum Rainbow, Corn Chamomile, Corn Cockle, Corn Marigold, Corn Poppy, Cornflower (extra), Cosmidium Brunette, Dwarf Lupin, Dwarf Morning Glory, Echium Blue Bedder, Fairy Toadflax, Garden Cosmos [Dwarf], Godetia Azalea, Larkspur, Love In A Mist, Phacelia, Red Flax, Shirley Singles Poppy, Sulphur Cosmos [Dwarf] & Zinnia Elgans

100% 2-4G 80:20 5G per m2 | SKU: 8989

### HC4 DWARF MEADOW (ANNUAL & PERENNIAL)

Annual Wildflowers Included: African Daisy, Blue Flax, California Poppy, Candy Tuft, Dwarf Morning Glory, Fairy Toadflax, Godetia Azalea, Larkspur, Love-In-A-Mist, Red Flax & Shirley Singles Poppy

Perennial Wildflowers Included: Blanket Flower, Carthusian Pink, Dwarf Lupin, English Marigold, Feathered Pink & Siberian Wallflower

100% 2-4G 80:20 5G per m2 | SKU: 8981







### HC5 KALEIDOSCOPE (ANNUAL)

Annual Wildflowers Included: African Daisy, Babys Breath, Black Eyed Susan, Blue Flax, California Poppy, Candy Tuft, Cornfield Annual Mix, Cosmidium Brunette, Dwarf Morning Glory, Fairy Toadflax, Golden Tickseed, Larkspur, Love-In-A-Mist, Phacelia, Red Flax, Shirley Singles Poppy & Zinnia Elegans Mix

100% 2-4g per m2 | SKU: 8983



### HC6 SHERBERT FIZZ (ANNUAL)

Annual Wildflowers Included: Black Eyed Susan, Blue Flax, California Poppy, Candy Tuft, Corn Marigold, Cornflower, Dwarf Morning Glory, Garden Cosmos (Dwarf), Love In A Mist, Phacelia, Sulphur Cosmos (Dwarf) & Zinnia Elgans

100% 2-4g per m2 | SKU: 8984



### HC7 BUTTERFLY PARADISE (ANNUAL & PERENNIAL)

Annual Wildflowers Included: Babys Breath, Black Eyed Susan, California Poppy, Candytuft, Cleome Spider Flower, Chrysanthemum Carinatum Rainbow, Cornflower, Corn Poppy, Cosmidium Brunette, Fairy Toadflax, Garden Cosmos (Dwarf), Godetia Azalea, Golden Tickseed, Purple Loosestrife, Sulphur Cosmos (Dwarf), Zinnia Elgans

Perennial/Biennial Wildflowers Included: Common Knapweed, Devils Bit Scabious, Dotted Gayfeather, Oriental Poppy, Oxeye Daisy, Purple Coneflower, Purpletop Vervain, Red Campion, Rose Campion

100% 2-4g per m2 | SKU: 8977



### HC10 THE BEES KNEES (ANNUAL & PERENNIAL)

Annual Wildflowers Included: Bishops Flower, Black Eyed Susan, California Poppy, Candytuft, Chrysanthemum Carinatum Rainbow, Cornflower, Dwarf Morning Glory, Fairy Toadflax, Garden Cosmos (Dwarf), Love-In-A-Mist, Peredovic Sunflower, Phacelia, Sulphur Cosmos (Dwarf) & Zinnia Elgans

Perennial/Biennial Wildflowers Included: Carthusian Pink, Common Knapweed, Devils Bit Scabious, Field Scabious, Foxglove, Greater Knapweed, Jacobs Ladder, Michaelmas Daisy, Purple Coneflower, Red Campion, Sainfoin, Vipers

100% 2-4g per m2 | SKU: 8987



### HC11 AMERICAN PRAIRIE (ANNUAL & PERENNIAL)

Annual Wildflowers Included: California Poppy, Cleome Spider Flower, Fairy Toadflax, Golden Tickseed, Larkspur & Zinnia Elgans

Perennial/Biennial Wildflowers Included: Black Eyed Susan, Blanket Flower, Blue Flax, Dotted Gayfeather, Dwarf Lupin, Michaelmas Daisy, Oxeye Sunflower, Purple Coneflower, Purple Prairie Clover, Rocky Mountain Penstemon, Wild Bergamot, Yarrow, Yarrow Cloth Of Gold & Yarrow Colorado Blend

100% 2-4g per m2 | SKU: 8993



### HC12 BUMBLEFLY (ANNUAL & PERENNIAL)

Annual Wildflowers Included: Babys Breath, Bishops Flower, Black Eyed Susan, California Poppy, Candytuft, Cleome Spider Flower, Cornflower, Corn Poppy, Cosmidium Brunette, Fairy Toadflax, Garden Cosmos, Godetia Azalea, Golden Tickseed, Love-In-A-Mist, Peredovic Sunflower, Phacelia, Purple Loosestrife & Sulphur Cosmos

Perennial/Biennial Wildflowers Included: Carthusian Pink, Common Knapweed, Devils Bit Scabious, Dotted Gayfeather, Field Scabious, Foxglove, Greater Knapweed, Jacobs Ladder, Michaelmas Daisy, Oriental Poppy, Oxeye Daisy, Purple Coneflower, Purpletop Vervain, Red Campion, Rose Campion, Sainfoin, Vipers Bugloss, White Campion, Wild Bergamot, Yarrow, Yarrow Cloth Of Gold

100% 2-4g per m2 | SKU: 8994





#### AC1 CORNFIELD ANNUAL (ANNUAL)

Annual Wildflowers Included: Corn Chamomile, Corn Cockle, Corn Marigold, Corn Poppy & Cornflower

Also available with grass 80:20

100% 2-4g 80:20 5g per m<sup>2</sup> | SKU: 8962



#### P1 ACID SOILS (ANNUAL & PERENNIAL)

Wildflowers 100%: AC1 Cornfield Annual Mix, Autumn Hawkbit, Betony, Birdsfoot Trefoil, Bulbous Buttercup, Common Knapweed, Common Sorrel, Common Vetch, Devils Bit Scabious, Hairy Vetch, Ladys Bedstraw, Meadow Buttercup, Oxeye Daisy, Ragged Robin, Ribwort Plantain, Selfheal, Sheeps Sorrel, Tufted Vetch, White Champion, Wild Foxglove, Wood Sage, Yarrow & Yellow Rattle

Also available with grass 80:20

100% 2-4g 80:20 5g per m<sup>2</sup> | SKU: 8963



#### AP1 PREMIUM (ANNUAL & PERENNIAL)

Wildflowers 100%: Corn Chamomile, Corn Cockle, Corn Marigold, Corn Poppy, Cornflower, Agrimony, Betony, Birdsfoot Trefoil, Buttercup Mix, Common Knapweed, Common Sainfoin, Common Trefoil, Devils Bit Scabious, Field Scabious, Greater Knapweed, Ladys Bedstraw, Meadowsweet, Musk Mallow, Oxeye Daisy, Ragged Robin, Red Champion, Salad Burnet, Self Heal, Small Scabious, Vipers Bugloss, White Champion, Wild Carrot, Yarrow & Yellow Rattle

Also available with grass 80:20

100% 2-4g 80:20 5g per m<sup>2</sup> | SKU: 8953



#### P2 WATER MARGINS (ANNUAL & PERENNIAL)

Wildflowers 100%: AC1 Cornfield Annual Mix, Betony, Birdsfoot Trefoil, Common Knapweed, Common Meadow Rue, Devils Bit Scabious, Greater Birdsfoot Trefoil, Gypsywort, Hemp Agrimony, Ladys Bedstraw, Meadow Buttercup, Meadowsweet, Oxeye Daisy, Purple Loosestrife, Ragged Robin, Red Champion, Ribwort Plantain, Salad Burnet, Selfheal, Sneezewort, Square Stalked St Johns Wort, Tufted Vetch, Water Avens, Wild Angelica, Yarrow, Yellow Flag Iris & Yellow Rattle

Also available with grass 80:20

100% 2-4g 80:20 5g per m<sup>2</sup> | SKU: 8965

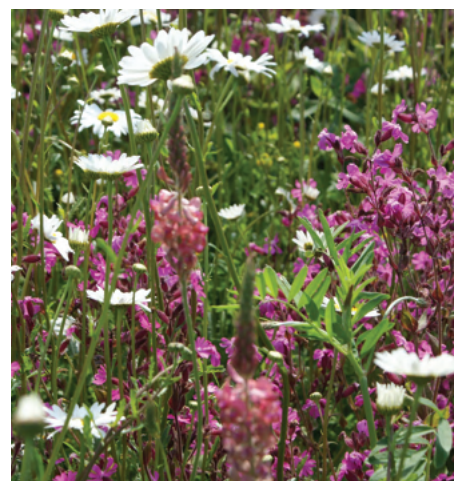


#### AP2 ECO (ANNUAL & PERENNIAL)

Wildflowers 100%: Corn Chamomile, Corn Cockle, Corn Marigold, Corn Poppy, Cornflower, Common Vetch, Birdsfoot Trefoil, Buttercup Mix, Common Knapweed, Hairy Vetch, Ladys Bedstraw, Lucerne, Oxeye Daisy, Phacelia, Red Champion, Sainfoin, Salad Burnet, Self Heal, White Champion, Wild Carrot, Yarrow & Yellow Rattle

Also available with grass 80:20

100% 2-4g 80:20 5g per m<sup>2</sup> | SKU: 8959



#### P3 CALCAREOUS (ANNUAL & PERENNIAL)

Wildflowers 100%: AC1 Cornfield Annual Mix, Birdsfoot Trefoil, Bulbous Buttercup, Common Knapweed, Common Sainfoin, Common Sorrel, Devils Bit Scabious, Field Scabious, Greater Knapweed, Kidney Vetch, Lady's Bedstraw, Meadow Buttercup, Meadow Sweet, Oxeye Daisy, Red Champion, Ribwort Plantain, Salad Burnet, Self Heal, Small Scabious, Wild Carrot, Yarrow & Yellow Rattle

Also available with grass 80:20

100% 2-4g 80:20 5g per m<sup>2</sup> | SKU: 8955





**P4 HEDGEROW  
(ANNUAL & PERENNIAL)**

Wildflowers 100%: AC1 Cornfield Annual Mix, Agrimony, Bladder Campion, Common Knapweed, Common Sorrel, Common Vetch, Field Scabious, Foxglove, Garlic Mustard, Greater Knapweed, Hairy Vetch, Hedge Bedstraw, Ladys Bedstraw, Meadow Buttercup, Oxeye Daisy, Red Campion, Ribwort Plantain, Selfheal, Upright Hedge Parsley, White Campion, Wild Basil, Wild Carrot, Wood Avens, Yarrow & Yellow Rattle

Also available with grass 80:20

100% 2-4g 80:20 5g per m2 | SKU: 8969



**P5 WOODLAND & HEAVY SHADE  
(ANNUAL & PERENNIAL)**

Wildflowers 100%: AC1 Cornfield Annual Mix, Agrimony, Betony, Bluebell, Columbine, Common Knapweed, Common Trefoil, Foxglove, Garlic Mustard, Hairy Vetch, Hedge Bedstraw, Hedge Woundwort, Meadow Buttercup, Meadow Sweet, Oxeye Daisy, Ragged Robin, Ramsons, Red Campion, Selfheal, Tufted Vetch, White Campion, Wild Angelica, Wood Avens, Wood Sage & Yarrow

Also available with grass 80:20

100% 2-4g 80:20 5g per m2 | SKU: 8967



**P6 DAMP LOAM  
(ANNUAL & PERENNIAL)**

Wildflowers 100%: AC1 Cornfield Annual Mix, Birdsfoot Trefoil, Bladder Campion, Common Knapweed, Common Sorrel, Field Scabious, Greater Knapweed, Ladys Bedstraw, Meadow Buttercup, Meadow Sweet, Meadow Vetchling, Musk Mallow, Oxeye Daisy, Ragged Robin, Red Campion, Ribwort Plantain, Rough Hawkbit, Salad Burnet, Selfheal, Tufted Vetch, White Campion, Wild Carrot, Yarrow & Yellow Rattle

Also available with grass 80:20

100% 2-4g 80:20 5g per m2 | SKU: 8971



**P7 DRY/SANDY SOILS  
(ANNUAL & PERENNIAL)**

Wildflowers 100%: AC1 Cornfield Annual Mix, Agrimony, Autumn Hawkbit, Birdsfoot Trefoil, Bladder Campion, Common Knapweed, Common Sainfoin, Common Sorrel, Common Trefoil, Field Scabious, Greater Knapweed, Lady's Bedstraw, Meadow Buttercup, Musk Mallow, Oxeye Daisy, Red Campion, Ribwort Plantain, Salad Burnet, Selfheal, Toadflax, Vipers Bugloss, White Campion, Wild Carrot, Yarrow & Yellow Rattle

Also available with grass 80:20

100% 2-4g 80:20 5g per m2 | SKU: 8974



**P8 FLOWERING LAWN  
(ANNUAL & PERENNIAL)**

Wildflowers 100%: Betony, Birdsfoot Trefoil, Bulbous Buttercup, Catsear, Common Daisy, Common Sorrel, Common Trefoil, Kidney Vetch, Ladys Bedstraw, Lawn/Roman Chamomile, Meadow Buttercup, Oxeye Daisy, Ribwort Plantain, Rough Hawkbit, Salad Burnet, Selfheal, Sheeps Sorrel, Toadflax, White Clover (Small Leaved), Wild Mignonette, Wild Red Clover, Yarrow & Yellow Rattle

Also available with grass 80:20

100% 2-4g 80:20 5g per m2 | SKU: 8991



**P9 HEAVY SOILS  
(ANNUAL & PERENNIAL)**

Wildflowers 100%: AC1 Cornfield Annual Mix, Agrimony, Betony, Birdsfoot Trefoil, Common Cats Ear, Common Knapweed, Common Sorrel, Common Trefoil, Devils Bit Scabious, Field Scabious, Greater Knapweed, Ladys Bedstraw, Meadow Buttercup, Meadowsweet, Musk Mallow, Oxeye Daisy, Ragged Robin, Ribwort Plantain, Salad Burnet, Self Heal, Sheeps Sorrel, St Johns Wort, Tufted Vetch, White Campion, Wild Carrot, Yarrow & Yellow Rattle

Also available with grass 80:20

100% 2-4g 80:20 5g per m2 | SKU: 8957





## MYCORRHIZAE SEED TECHNOLOGY

All seed mixtures are now available with a mycorrhizae seed treatment, which is mixed into the seed mix when packed on site.

What is Mycorrhizae? A naturally occurring beneficial fungus that forms a symbiotic relationship with the plants. It attaches to the roots and becomes extensions of the root system. This dramatically expands access to moisture and nutrients from the soil. In return, the host plant feeds the fungi with sugars and organic substances. For further information call 01377 271400 or speak to your local representative/distributor

### How does this benefit?

- Improves establishment
- Increases the % of sown grasses in the sward over weeds
- Greatly improves root mass
- Increases nutrient uptake
- Less prone to disease and recovers faster after disease
- Increases plant tolerance to drought and stressful conditions

Hurrells have been working closely with the BDC (Biorenewables Development Centre) at the University of York to understand and develop benefits for our customers.



### Characteristics of some grass species

CHARACTERISTICS	PERENNIAL RYEGRASS	STRONG CREEPING RED FESCUE	CHEWINGS FESCUE	SLENDER CREEPING RED FESCUE	SHEEPS / HARD FESCUE	TALL FESCUE	SMOOTH STALKED MEADOW GRASS	CREEPING BENT	FINE LEAVED BENT
WEAR TOLERANCE	10	4	3	4	3	7	9	2	1
DISEASE TOLERANCE	8	7	5	4	5	8	7	2	2
DROUGHT RESISTANCE	4	6	7	8	8	9	5	5	3
SPEED OF ESTABLISHMENT	10	8	7	6	6	5	2	4	3
NUTRIENT REQUIREMENTS	9	6	4	4	3	7	8	9	7
HEAT TOLERANCE	2	5	6	6	5	8	5	7	5
FINENESS OF LEAF	2	4	8	8	9	1	3	6	6
CLEANNES OF CUT	3	7	8	8	9	2	5	6	6
SALT TOLERANCE	4	5	7	8	9	7	4	5	5
SHADE TOLERANCE	5	6	6	6	7	6	5	5	5
SHOOT DENSITY	3	9	9	9	9	2	5	8	9
SUBMERSION TOLERANCE	2	4	4	4	3	5	4	3	3
THATCH PRODUCTION	1	4	5	6	5	3	3	9	7
COLD TOLERANCE	2	3	3	3	4	3	6	6	5

### Useful dimensions and sizes

	DIMENSIONS (M)	AREA (M2)	20KG BAG REQUIREMENTS SOWN AT:			
			25G PER (M2)	35G PER (M2)	50G PER (M2)	70G PER (M2)
FOOTBALL	100m x 64m	6400m2	8	11	16	22
RUGBY	100m x 69m	6900m2	9	12	17	24
CRICKET SQUARE	30m x 30m	900m2	6	9	13	18
LAWN TENNIS	24m x 11m	262m2	1	2	2	3
BOWLS	40m x 40m	1600m2	2	3	4	6
GOLF GREEN	Average Size -	500m2	1	1	1	2
GOLF TEE	Average Size -	350m2	1	1	1	1
ONE HECTARE		10,000m2	13	18	25	35
ONE ACRE		4047m2	5	7	10	14





Local club @beverleytcc showing how it's done after reseeding a newly laid square



Bespoke Fescue grass seed mixtures made for @gantongolfclub. Both for fairways and greens to improve sward composition, density and drought tolerance



cj.garden.services "Summer lawn stripes on the creeping rye from" @hurrells\_seeds



High colour Wildflower meadow over at @porschecentreull, sown by @maplewood\_landscapes. Great work and result in some very dry weather

TAG US ON SOCIAL MEDIA!



Ryan Pepper "Nice day to get into the rugby today 2nd team pitch double cut looking really well @HmSeedsAmenity @stpetersyork" Great work guys

BANK DETAILS

HURRELL & MCLEAN SEEDS LTD  
ACCOUNT NUMBER - 4014 2077  
SORT CODE - 20-43-47  
BANK - BARCLAYS

OTHER DETAILS

EMAIL: INFO@HMSEEDS.COM  
PHONE: 01377 271400  
WEB: WWW.HMSEEDS.COM

COMPANY REG NO: 03352454  
VAT NO: 847272702  
MERCHANT: 01062  
REGULATED BY DEFRA

ADDRESS

HURRELL & MCLEAN SEEDS LTD  
BEVERLEY ROAD  
CRANSWICK, DRIFFIELD  
EAST YORKSHIRE  
YO25 9PF

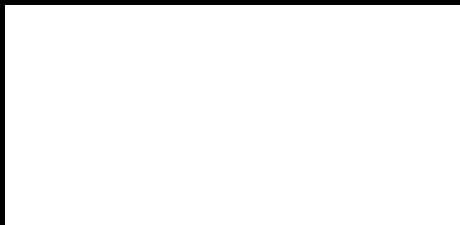






HURRELLS SEEDS,  
BEVERLEY ROAD,  
CRANSWICK  
EAST YORKSHIRE,  
YO25 9PF

01377 271400  
INFO@HMSEEDS.COM  
WWW.HMSEEDS.COM



EDITION  
£9.99

